

Architec Range

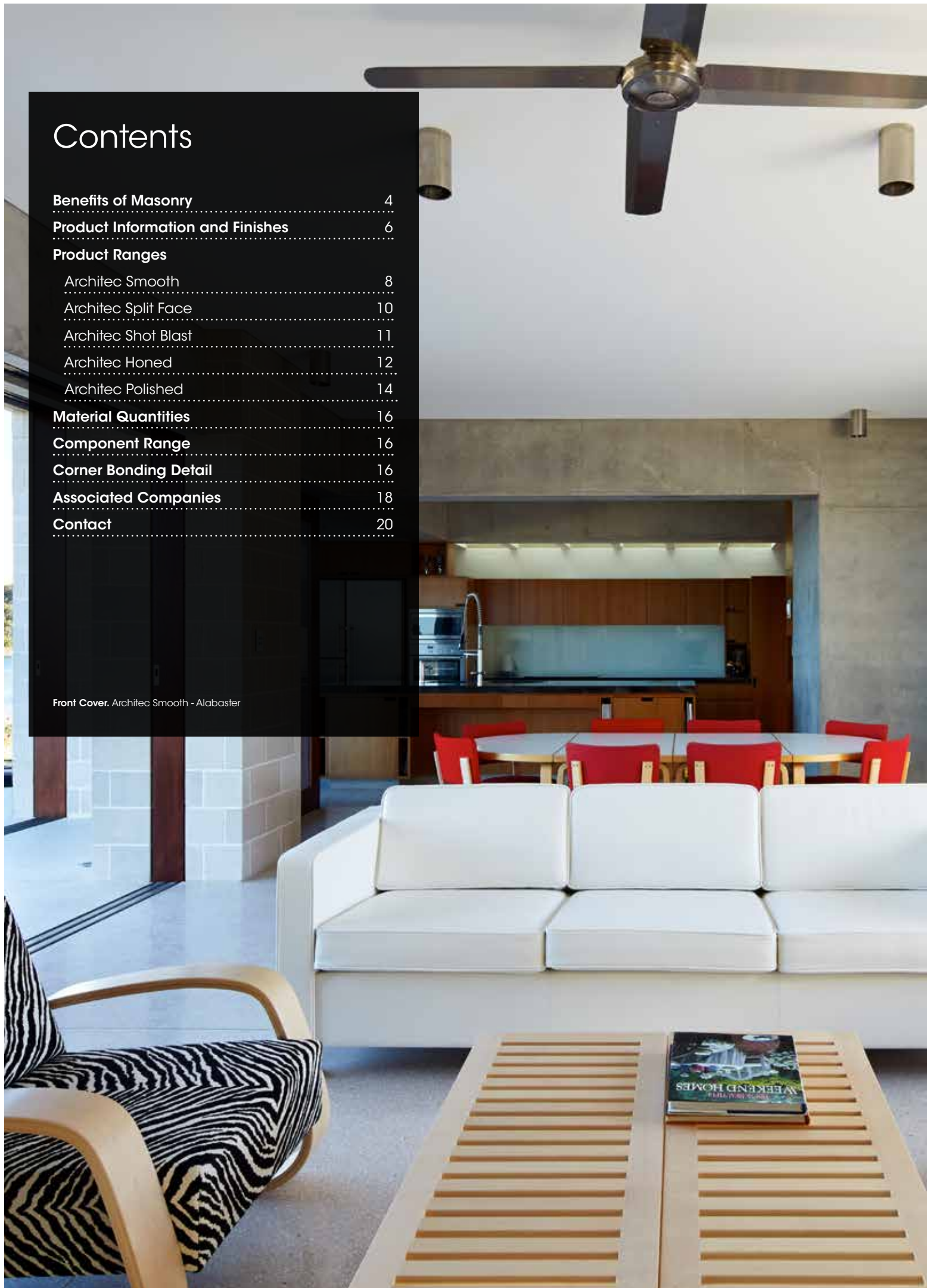
Architectural Concrete Blocks

masonry.
style and
function

Contents

Benefits of Masonry	4
Product Information and Finishes	6
Product Ranges	
Architec Smooth	8
Architec Split Face	10
Architec Shot Blast	11
Architec Honed	12
Architec Polished	14
Material Quantities	16
Component Range	16
Corner Bonding Detail	16
Associated Companies	18
Contact	20

Front Cover. Architec Smooth - Alabaster





Architec Range Architectural Concrete Blocks.

Our range of coloured, standard and premium masonry have set a new standard in quality and style for the versatile concrete block.

By adding oxides and coloured sands to our mix of raw materials, we produce blocks with contemporary colours, textures and appeal. Ideal for a range of projects from a modern beach residence to impressive commercial projects Austral Masonry has an array of products to suit your style.

Austral Masonry blends fine sand, cement, aggregate and quality colouring agents to produce unique coloured blocks. Having long been the workhorse of the construction industry, our products are frequently specified in cutting-edge residential and commercial designs due to their strength and versatility.

Part of the Brickworks Building Products Group, one of Australia's largest and most innovative building product manufacturers, Austral Masonry is part of a group of manufacturers which includes other industry leading brands such as Austral Bricks®, Bristile Roofing®, Austral Precast™ and Auswest Timber®.



Benefits of masonry

When considering building products to use on your project its important to understand all the pro's and con's before making your final selections. But with concrete masonry products you know your making the right choice when you consider the host of benefits they offer including: sound insulation, thermal mass, environmental impact, colours and finishes, ongoing maintenance and many more. See the list of benefits below so you can build in confidence with concrete masonry.

Sound insulation

Due to their mass, concrete masonry blocks out noise better than traditional building materials, resulting in a quieter home environment.

Range of colours and finishes

Concrete masonry products are available in a range of over 78 colour and finish combinations. This offers you a wide range of products to choose from to suit the style of your home.

Thermal mass

Due to their mass concrete masonry products slow the transfer of external temperature fluctuations into internal living areas thereby reducing the need for artificial heating and cooling devices.

Affordable

When comparing other products on the market concrete masonry is an affordable option. This is especially true when considering the complete building system as concrete masonry can reduce or negate the need for accessory products such as sarking and insulation.

Low maintenance

When you build with concrete masonry products you are building with a material that requires minimal maintenance and upkeep so you have more time for the important things in life.

Lower energy costs

Concrete masonry products are high thermal mass products which slow the transfer of temperature fluctuations from the outside into internal living areas. This reduces the need for use of artificial heating and cooling devices and thereby reduces associated energy costs.

Fire resistant

Concrete masonry products are made from non combustible materials so they are fire resistant and therefore ideal for bushfire prone areas.

Weather resistant

Exterior Walls that will hold up to heavy storms, U.V. degradation, blistering heat, and sub-zero temperatures.

Termite resistant

Masonry walls wont be degraded by termites as there's no wood for the termites to eat.

Low environmental impact

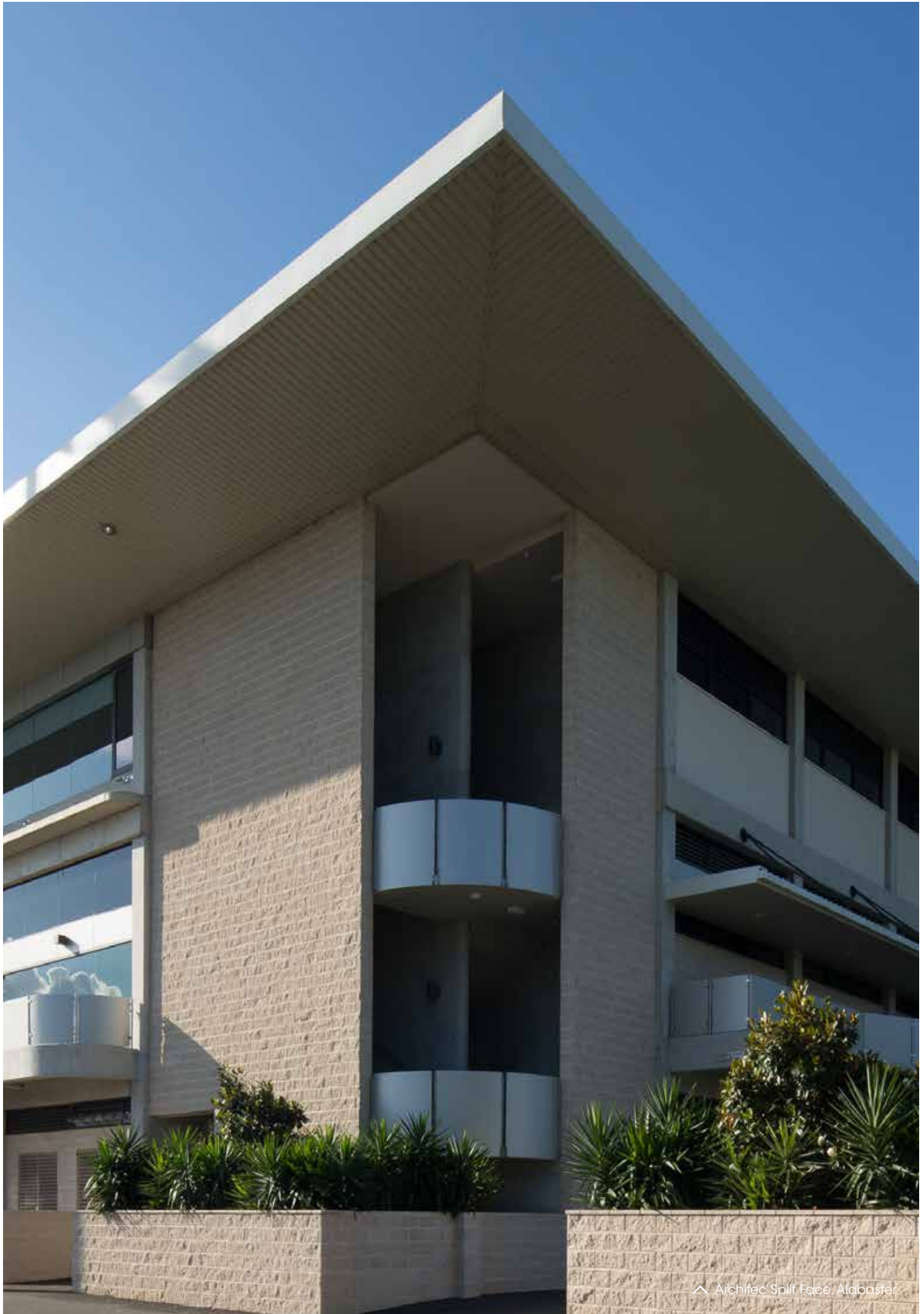
Masonry products production has minimal impact on the environment because they do not deplete precious natural and limited resources like many other materials. Concrete masonry products are cured in temperature controlled kilns with comparatively little energy used compared to kiln fired products.

Impact resistance

Because masonry products are made from concrete they are strong and durable which means that they can endure significant impact from external forces with minimal if any impact.

Speed of construction

Concrete masonry products are much faster to build with than some commonly used walling materials and have the added benefit of being both structural and aesthetic.



Finishes guide

The Architec Range is available in a range of finishes to suit your style and project.

Shot Blast



This process subtly exposes the aggregates, producing a weathered, stone-like finish.

Available in:
Architec Shot Blast

Split Face



The splitting process used to create these blocks produces a bold textured exposed aggregate finish.

Available in:
Architec Split Face

Smooth



A finely textured finish created through the standard moulding process.

Available in:
Architec Smooth

Honed



The honing process grinds 2-3mm from the block surface producing a matt exposed aggregate finish.

Available in:
Architec Honed

Polished



The polished finish results from extra aggregate that's entered into the mix which is then exposed through the Polishing process.

Available in:
Architec Polished

Range of Sizes

Architec Blocks are available in a range of sizes to suit various applications.

Each series noted below relates to the blocks thickness (so a 100 Series block is 100mm thick in application). Each series comprises numerous block formats and lengths.



100mm Series



150mm Series



200mm Series



Architec Smooth

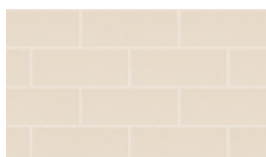
Create a smooth and subtle finish with Architec Smooth.

Its smooth surface gives a soft glow to any project. Offering contemporary colours from Alabaster to Pearl Grey, there's an option to suit most colour schemes.



Architec Smooth, Alabaster

Colours Available



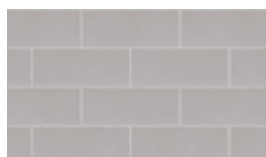
Alabaster



Almond



Charcoal



Pearl Grey

Finish



Smooth



Architec Split Face

The rustic finish of split face creates a distinctive look.

The splitting process used to create these blocks produces a bold textured, exposed aggregate finish.

Colours Available



Alabaster



Almond



Charcoal



Pearl Grey

Finish



Split Face



Architec Shot Blast

Experience the subtle texture and hints of a stone in Architec Shot Blast.

This process subtly exposes the aggregates, producing a weathered, stone-like finish.

Colours Available



Alabaster



Almond



Charcoal



Pearl Grey

Finish



Shot Blast



Architec Honed

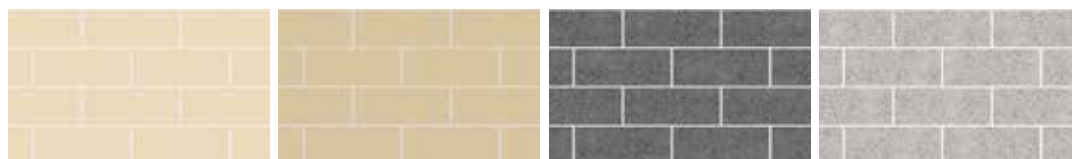
If tried and true is what you're after
then the GB Smooth range is for you.

The honing process grinds 2-3mm from
the block surface, producing a matt
exposed-aggregate finish.



^ Architec Honed, Pearl Grey

Colours Available



Alabaster

Almond

Charcoal

Pearl Grey

Finish



Honed



Architec Polished

See the lustrous finish of Architec Polished.

The polishing process reveals the aggregate used in the blocks composition, giving them a lustrous finish where the aggregate is revealed.



Colours Available



Alabaster

Almond

Charcoal

Pearl Grey

Finish



Polished

Architec™ Material Quantities

Material Quantities for Mortar

Notes

- One cubic metre of mortar will lay approximately 800 to 1200 blocks.

Masonry Units

Architec™ is manufactured in accordance with the provisions of Australian Standard AS/NZS4455:2008.

Mortar

Mortar mix options in AS3700 include cement;lime and sand in 1:1:6 proportions for M3 (general) and in 1:0.5:4.5 proportions for M4 (Exposure Grade). While these make better mortar, the adjacent mixes, without lime, are more common. The adjacent mixes are based on one 20kg bag per mix.

Core Filling

When core filling Architec™ walls, some seepage may occur due to high hydrostatic pressure. Ensure it is cleaned off before it dries, otherwise staining will occur. It is essential that the block work is kept clean from mortar smears. This will eliminate the need for aggressive acid based cleaning solutions which can damage the face or change the colour of the concrete blocks.

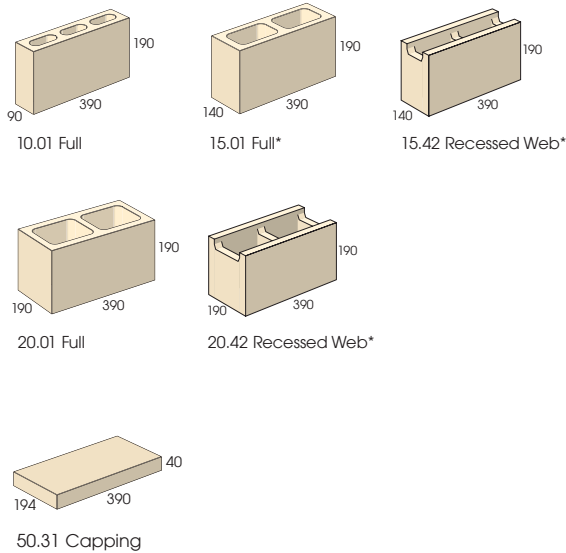
Oxide quantities below are **approximate** and assume sand is near white. Trial batches should be made and assessed for colour-match for blocks when dry. Contrasting mortar colour is not recommended due to difficulty of cleaning smears.

Alabaster	White oxide	0.8kg
Almond	Yellow oxide	0.1kg
Pearl Grey	Black oxide	0.01kg
Charcoal	Black oxide	0.5kg

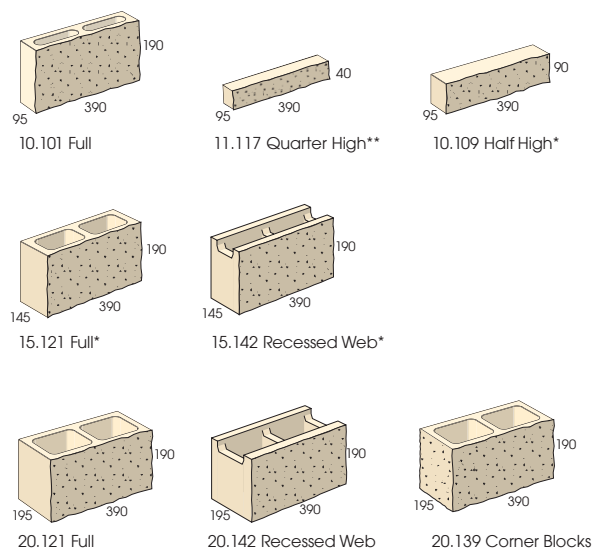
Joints should be finished with an ironing rod to make them smooth, dense and more water resistant. (Mandatory in severe marine environments). Raked joints are NOT permitted in hollow blocks (unless corefilled as per AS3700)

Component Range

Smooth, Shot-Blast, Honed and Polished Architec™



Split Face Architec™



* Made to order only.

** Not available in all locations.

Please note.

190mm Split Face product and 20.139 corner unit may vary somewhat in colour compared to other products. This is because these products are produced in a different production facility and use different materials in their manufacture. Austral Masonry recommends all customers see actual product samples prior to making final selections.

M3 Mortar Mix (general purpose)

One 20kg bag of Off-White cement and oxide# 100kg clean sand. (18 shovels @ 5.6kg) 0.1kg of Dynex or similar methyl cellulose plasticiser. This yields 0.08 cubic metres and will lay 60 to 100 Architec™ Blocks.

M4 Mortar Mix (exposure grade)

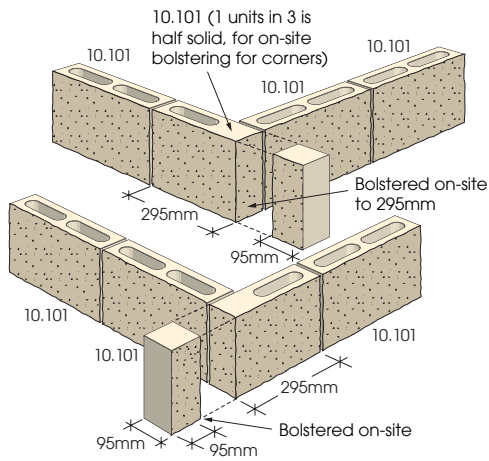
One 20kg of Off-White cement and oxide# 80kg clean sand. (14 shovels @ 5.7kg) 0.1kg of Dynex or similar methyl cellulose plasticiser. This yields 0.06 cubic metres and will lay 50 to 75 Architec™ Blocks.



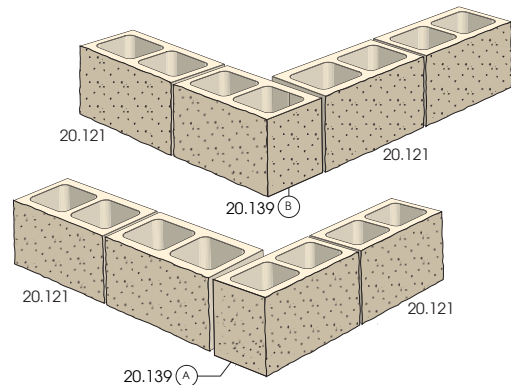
Architec Smooth, Alabaster

Corner Bonding Detail

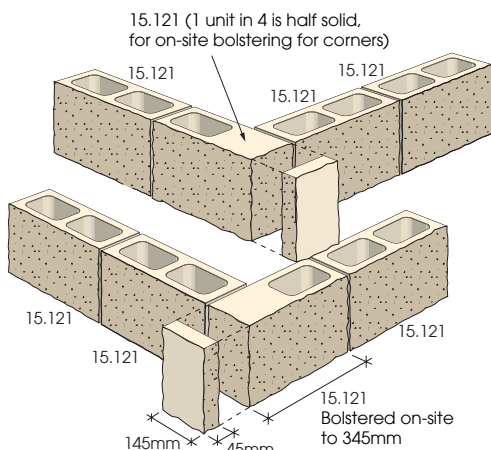
Split Face Architec™



Series 100 Corner



Series 200 Corner



Series 150 Corner

Block Information and Helpful Hints

Block Thickness

Blocks are available in a series of five thicknesses:

100mm Series - 90mm total block thickness

120mm Series - 110mm total block thickness

150mm Series - 140mm total block thickness

200mm Series - 190mm total block thickness

300mm Series - 290mm total block thickness

Block Types

Blocks are manufactured to three levels of coring.

Solid - a solid block with no core hole

Cored - < 30% core hole volume

Hollow - >30% core hole volume

BACK UP Block Height

Backup blocks are 162mm high, so that one grey block will equal two courses of standard bricks. This enables the brick ties to reinforce the skins when the two products are used in the same double skin wall. Half height blocks are also available.

Specials

Lintels, H blocks, Channels, and Bond Beams enable blocklayers to place reinforcing bars in a wall in line with engineering guidelines.

Fire and sound resistance

Details are available on request from your local Austral Masonry Design Centre.

Codes of practice

Austral Masonry products are manufactured in accordance with the provisions of Australian Standard AS445:2008 Masonry Units and Segmental Pavers. It is recommended that design, drawing practice and construction be carried out in accordance with AS 3700, Masonry Structures.

Modular planning

The dimensions of masonry units are based on a 100mm module.

The actual size of units shown in this catalogue are in all cases 10mm smaller than their nominal size to allow for joint thickness. For example, a block having an actual length of 390mm will be classified as having a nominal length of 400mm.

Estimating data, including tables of wall length and wall height, are given elsewhere in this catalogue.

Block laying

Dry units are essential. Blocks should never be wetted prior to the application of mortar. Blocks should be kept dry when stored on site before use. Whenever work is stopped, the tops of walls should be covered to prevent moisture entering the cores of the blocks. Blocks should be laid with the thickest shell uppermost. Care shall be taken not to allow mortar to drop into cores if it is to be grouted. A clean out course is recommended and usually specified.

Jointing

The mortar squeezed from the joints should be struck off flush with the wall as each block is laid. When the mortar has stiffened and is firm to the touch, it should be firmly compacted with a jointing tool. This compaction is important since mortar, when hardening, has a tendency to shrink slightly.

Control joints

When required, control joints should be located:

- at major changes in wall height,
- at changes in wall thickness, other than for piers and buttresses,
- at control joints in footings, in the roof, and in floors,
- at chases and recesses for pipings, columns, fixtures, etc.
- at one or both sides of wall openings,
- near wall intersections.
- other than as above, unreinforced masonry should have control joints at 6m centres. 16m if adequately reinforced.

Wall ties

Wall ties for cavity walls should be provided in accordance with AS 3700.

Bond beams

A bond beam is a continuous beam around the exterior of a building for the purpose of providing lateral stability to the walls, and to minimise the possibility of shrinkage cracking at openings. Bond beam blocks should be filled with concrete or grout as specified and suitable reinforcing steel. Reinforcement should be not less than 12mm deformed bars.

Flashing

In cavity walls, flashing shall be placed at an angle across the cavity to discharge moisture towards weep holes. Turn up ends to prevent moisture draining into cavities. Flashing and capping should be provided to the tops of all parapets.

Cleaning

Care should be taken during construction of masonry walls to prevent excess mortar being smeared over the faces of the blocks. Finished walls should be cleaned down after the mortar has hardened by rubbing with a piece of block or carborundum stone, wire brushing where necessary. Acid must not be used for cleaning concrete masonry walls.

Delivery

Delivering your blocks is the first step in the construction process. Here are a few simple guidelines to help with a smooth delivery.

- **Deliver ahead of time**, preferably at least a day before work commences. Please give us at least 48 hours notice for subsequent deliveries.
- **Take as many blocks as you can in one delivery** to ensure priority service and efficient on-site blending.
- **Help us find you** by giving us a clear street address, including the nearest crossroad. Tell us of any obstacles such as narrow, dead-end or one-way streets etc. Place job site signs prominently.
- **Ensure easy site access** by telling us beforehand about any difficulties. If you require us to enter through neighbouring land, it's your responsibility to get prior, written permission.
- **On-site pack placement** needs to be organised before delivery - use signs to indicate placement points.
- **Blocks are heavy** and a tractor with a full pack weighs about five tonnes. Ensure the ground (including underlying pipes) and any pavement traversed can sustain this weight. Our tractors need at least 2.5 m clear width and 2.6 m height clearance.
- **Safety comes first** so please ensure children and pets are out of the way during delivery. Our driver has the final say when it comes to safety and possible site damage.
- **Inspect the delivery** and call Austral Masonry™ immediately if there are any problems. Product liability transfers to the purchaser once the units are installed.

Blending

Your bricklayer is a professional tradesman and is responsible for ensuring even colour distribution.

The blending instructions attached to all packs recommend:

1. Don't mix blocks of different types or qualities (for example, firsts and seconds).
2. Work from at least three open packs of the same block type and quality.
3. Select the top block from a top corner of each pack.
4. Work progressively from a corner down and across each pack in a diagonal pattern. (Don't remove blocks in horizontal layers.)





^ Austral Bricks®



^ Austral Precast®



^ Austral Masonry®

Associated Companies Brickworks Group of Companies

BRICKWORKS BUILDING PRODUCTS

Brickworks Building Products™ is one of Australia's largest and most diverse building material manufacturers. Under the Brickworks Building Products™ umbrella are some of Australia's best known building materials brands.

Our products include bricks, pavers, masonry blocks, retaining wall systems, precast concrete panels, concrete and terracotta roof tiles, timber products and specialised façade systems.

With a broad product portfolio and manufacturing and sales facilities across Australia, Brickworks Building Products™ is uniquely placed to service the demands of the building industry.

With over 1200 staff across Australia and New Zealand, we pride ourselves on our commitment to product and service excellence and our leadership position.



Founded in 1908, Austral Bricks® is Australia's largest, best-known and most efficient clay brick and paver manufacturer.

Austral Bricks® add distinct style to any type of home. Their natural colours and textures enable you to create striking façade contrasts or more traditional neutral colour tones. By investing in new technology Austral Bricks® now produce bricks with a variety of surface finishes, exciting colours and different sizes.

The result is a wonderful range of bricks for you to build a stylish, contemporary home.



BOWRAL BRICKS

When Bowral Bricks began production in 1922, a teenage Don Bradman was still scoring runs for the local side. Today their distinctive dry-pressed bricks are highly valued by discerning architects and builders across the country. The unique combination of traditional craftsmanship and modern technology will ensure that the Bowral Bricks brand will remain the benchmark for brick excellence for many years to come.



With a heritage reaching back to 1862, Nubrik™ premium-quality bricks are still moulded the traditional way on century-old presses. Their time-honoured expression of authenticity and elegance is acknowledged by architects, builders and discerning homebuyers who also value their rich colour blends, solidity and crisply-defined edges.



Since 1853, Daniel Robertson® has helped build Australia with building products that combine craftsmanship with architectural excellence. In a world of mass production, where qualities are constantly compromised, Daniel Robertson® premium-quality clay bricks are highly prized for their unique character, earthy appeal and individual charm.



Backed by a proud history of more than a century of brickmaking experience, NZ Brick Distributors™ offers New Zealand's most comprehensive range of high quality bricks and pavers in an unmatched palette of colours, textures and sizes, backed by a nation-wide sales and distribution network.



^ Bristle Roofing™



^ Auswest Timbers®



^ Terraçade

austral masonry™

Austral Masonry™ is a leading manufacturer and supplier of concrete masonry products focused on providing functional but stylish solutions to the civil, residential, commercial and industrial building and construction markets.

Our passion is to create products to meet the technical and functional demands of the building industry, while also delivering architecturally striking and fashionable finishes to completed building projects. Our range of products includes standard grey concrete blocks, coloured architectural concrete blocks with a range of different finishes and a comprehensive range of retaining walls, pavers and garden edging.

austral precast®

In just a few years, Austral Precast® has become Australia's premier supplier of high-quality, innovative and customisable precast concrete building solutions. Using state-of-the-art technology, production techniques and systems, our precast division produces a offer Walling, Flooring, Framework, Stairs, Balcony and Balustrade and collection of PermaTech finishing solutions to ensure design and creative flexibility. To meet the construction industry's ever-increasing demands, the company operates from four plants located along the eastern seaboard and in Western Australia.

bristleroofting®

For almost a century, Bristle Roofing™ has delivered stylish and innovative roofing products for Australian homes. Bristle is now one of Australia's largest manufacturers and installers of quality roof tiles and the exclusive Australian distributor of La Escandella premium-quality clay roof tiles from Spain. Product innovation, manufacturing expertise and first-class service guarantee a strong, low maintenance roofing solution that will look great and perform superbly for generations.

auswesttimbers®

From production facilities in Western Australia, Victoria and the ACT, Auswest Timbers® manufactures a diverse range of timber products. Jarrah, karri and chestnut timbers are processed into a range of decorative, seasoned products for furniture and joinery, flooring, decking, staircase components, veneers and fence screening. Green structural timbers are also processed for mine, wharf and rail track construction, as well as for floor joists, roofing timbers and roof tile battens.

Pronto Panel™

FASTER. BETTER. STRONGER.

Pronto Panel is a non-load bearing panel system that can be used both internally and externally. Pronto Panel's durable, lightweight and simplistic nature makes it perfectly suitable for both residential and commercial applications.

terraçade™

Facade systems are a cost-and time-efficient approach to cladding commercial and upscale residential buildings. The Terraçade™ system, developed in Australia by Brickworks Building Products, combines the visual appeal and colourfastness of terracotta with the low maintenance and functional efficiency demanded in today's competitive market.